

RW-30 RW-31

Three-Phase Field Testing

Portable Three-Phase Meter Site Source Analyzer



***Radian Research Reference Standard
Accuracy - Proven***

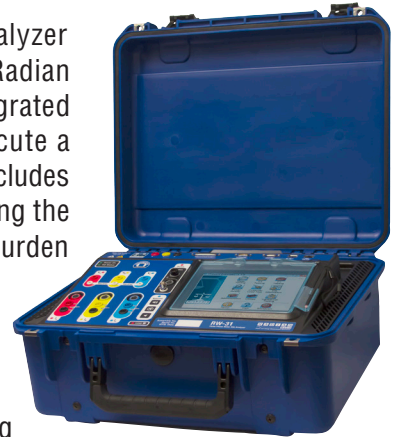
R A D I A N
WECO
Power and Energy Measurement Solutions

Portable Three-Phase Meter Site Source Analyzer

RW-30 RW-31

WECO's next generation Meter Site Source Analyzer delivers three-phase field-testing utilizing the Radian Research RD-3X series reference standard integrated within the unit. The RW-3X allows you to execute a multitude of tests at the customer's site which includes testing with sources to ANSI requirements. Testing the meter with the customer's load, performing CT burden

and ratio tests, and verifying system wiring gives you the peace of mind that the entire metering installation is correct. The RW-3X series also provides for Harmonic Analysis, CT Testing, Vectors, and Trends Testing all without ever pulling the meter from its socket.



Using the RW-3X is a familiar process due to the Microsoft™ Windows® 7, 64-bit operating system embedded within the unit. Large internal storage allows for numerous test results, as well as custom site configuration and test sequences to be saved locally on the RW-3X. The convenient touch screen interface allows instant access to the Winboard Embedded application without the need for an external keyboard, mouse, or monitor. These, however, can be easily connected to the RW-3X, providing you with additional options. You can also control the RW-3X from your iPhone or iPad by using WECO's Winboard Embedded Remote App — available for free in the iTunes App Store. A durable screen protector supplies an extra safeguard for the 8.4" LCD touch screen while shielding against glare for better visibility.



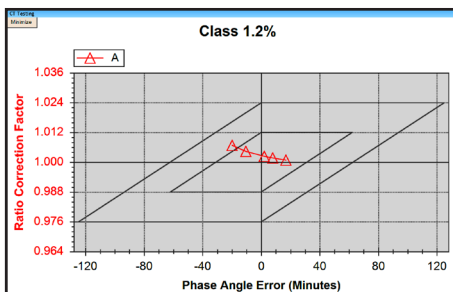
The RW-3X's feature-rich software, designed with user-friendly screens, lead you through installation, wiring checks, testing, and record keeping. Unlimited test profiles, sequences and site configurations may be created and saved. Test results are fully compatible with WECO's industry specific WATT-Net™ software, providing centralized record keeping with data editing and report generation. Data can be exported as Microsoft™ Excel, user-defined, or PDF files.



The RW-3X can perform a complete site analysis which includes Power Quality, Meter Testing, and Transformer Testing. Power Quality performs a Wiring Check to verify correct service wiring. If improper wiring is detected, the operator is prompted to correct the wiring before



testing will start. A Vector diagram gives a visual representation of the phase relationships. Primary and Secondary metrics and waveforms along with Harmonic content are displayed in real-time. Analyze Harmonics through the 60th order providing total harmonic distortion with the amplitude and phase of each Harmonic. Meter Testing allows for either sourced voltage and current or the customer's load for verifying meter accuracy. Transformer Testing provides burden and ratio accuracy measurement for both current and potential transformers along with demag for Current Transformers.

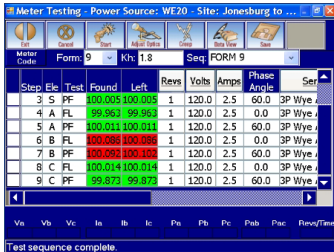


The RW-3X comes with fuseless voltage and current sources that self-protect against short-circuit, thermal, and over-current fault conditions. These internal sources provide six drive channels allowing independent waveforms for voltage and current on all three phases. Harmonic waveforms can be recorded in the field or manually created to be played back by the RW-3X. Recorded Harmonic waveforms can also be played back on the Model 4000 series testboards. Whether sinusoidal or distorted, both types of waveforms are solely under the user's control, and the test parameters can be repeated in the field or back at the shop. Using the RW-3X, the meter can be completely tested and analyzed for a wide range of repeatable test conditions.

The RW-30 ships with a powerful Radian Research three-phase reference standard, the RD-30, which boasts a 0.04% accuracy margin of error. If your utility demands higher levels of accuracy, then you may choose the RW-31 complete with a Radian Research RD-31 supplying 0.02% accuracy. These NIST traceable reference standards ensure a true meter accuracy test is being performed. Accuracy verification of the reference standard can automatically be performed using the RW-3X Standards Compare Routine allowing easy comparison to an external master standard.

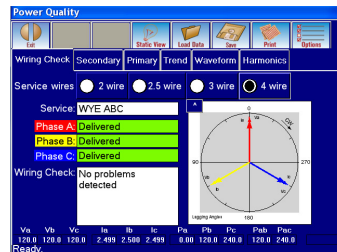
The RW-3X packs a lot of features into a small package:

Meter Testing



Meter Testing with the RW-3X allows you to really put a meter through its paces. Test any combination of elements, phases and test types with the selection of a predefined test sequence. Results are clearly displayed in an easy to read table. The user is alerted to tests that fall outside of a specified accuracy range by results that are clearly labeled in red.

Wiring Check



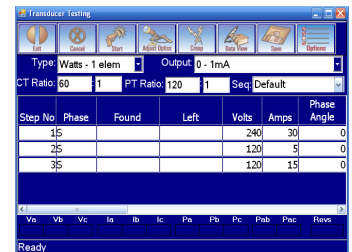
Wiring Check allows you to verify the service at a site and get valuable information about the service type, voltages, currents and phase angles. Wiring Check will also alert you to potential problems with the service.

Site Information



Site Information allows you to set up and recall specific information on the devices at a test site such as meters, current transformers and potential transformers. This method of data management keeps you from having to enter information while out in the field. If data is changed in the field the RW-3X updates the site information database so it's saved for the next time you test the site.

Transducer Testing

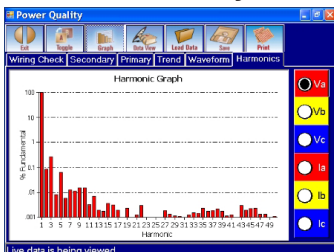


The RW-3X is capable of testing transducers with outputs between $\pm 20\text{mA}$.

Secondary Check

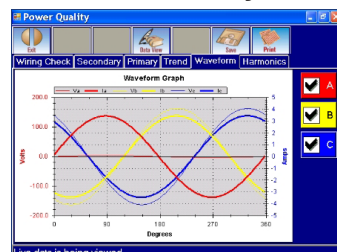


Harmonic Analysis



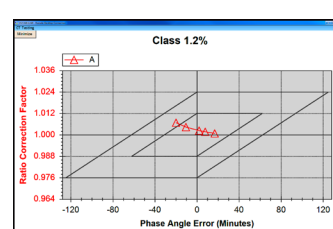
The system's powerful Harmonic Analysis feature displays harmonic data (both RMS and percent of fundamental) for all three phases up to the 60th harmonic as a bar graph or raw numbers.

Waveform Analysis



Waveform analysis gives you the ability to view voltage and current waveform graphs for all three phases. You can view a real time waveform graph for any combination of phases. The interactive graph allows you to zoom in and out as well as retrieve exact numerical measurements by clicking on any point.

CT Testing



Transformer Testing allows for the selection of any combination of ratio measurement and burden testing up to a maximum of 4.0 Ohms. Selected tests automatically run through in a single pass. Numerical results are given which are also plotted on a parallelogram. A separate "Demag" process can be run to demagnetize the transformer under test.

Primary Check



Retrieve data on the calculated electrical quantities for transformer secondaries and primaries of the meter installation with the RW-3X's Secondary and Primary Checks. Everything from Volts to VARS is measured, in real time, across all three phases for each check. Results are clearly displayed in a color-coded table and can be changed from real time to a snapshot with the click of the stylus.

RW-3X Accessories

Please note: the last two digits of the part number indicate the revision – example: BW015701. For the purpose of this document the current revision is represented by XX – example: BW0157XX.

CABLE SETS:

(BW0157XX) RW-30 / RW-31 Portable Three-Phase Meter Site Source Analyzer Basic Cable Set ---- The RW-3X ships with this Basic Cable Set which includes the following:



(BW0115XX) RW-3X Analog Sense Cable ---- The Analog Sense Cable easily clips to the output terminal of a transducer permitting accuracy testing for a wide variety of transducers.



(BW0148XX) RW-3X Potential Cable Assembly Set, 2mm Right Angle Plugs ---- Connect your RW-3X into the meter test switch and take control of the amount of potential applied to the meter. Our standard potential leads are 8 ft long with alligator clips which are designed for safety and durability. 1000V, 550mA inline fuses provide over-current protection for the RW-3X voltage channels.



(CF000076) Fuse 6.3 x 32, 500mA 1KV, Very Fast Acting ---- Replacement fuses for BW0148XX. 3 spare fuses are included with the basic cable set.



(BW0149XX) RW-3X Braided 'A', 'B', 'C' Phase Current Cable Set with Saf-T-Plugs ---- The current cable set with Saf-T-Plugs connects the RW-3X to the test switch allowing you to read the secondary current of the transformer as well as burden test the current circuit. This is a braided, 3 color-coded (red, yellow, blue) 8 ft cable.



(BW0096XX) RW-3X Bypass Current Cable Set for Use with Saf-T-Plugs ---- This cable set is used with the Phase Current Cable (BW0149XX) to jumper around the test switch and inject current into the meter.



(BW0150XX) RW-3X Braided 'A', 'B', 'C' Phase Current Cables with Alligator Clips ---- The current cable set with alligator clips allows you to connect the RW-3X to the current tabs of on a meter test switch. Once connected the RW-3X can control the current applied to any transformer rated meter. This is a braided, 3 color-coded (red, yellow, blue) 8 ft cable.



(BW0151XX) RW-3X Field Power Cable ---- Each RW-3X shipment includes a field power cord with alligator clips that connect to the bottom of the test switch, providing a convenient and safe way to power the unit at the site.



(CE000040) CAT5e RJ45M to RJ-45M Cross-Over Cable, 10 ft, Orange ---- With the supplied Ethernet cross-over cable, it is a cinch to directly connect the RW-3X to an external laptop for control of the unit without having to connect it to a network.



(CE110021) Shop Power Cord, 9 ft 10 in ---- Back at the shop, the AC shop power cord provides a convenient way to power the RW-3X from a standard 120VAC power outlet.



(CH001003) Test Switch Current Isolator ---- Don't waste time hunting around the shop for something to use to isolate currents in the test switch. The RW-3X ships with a set of six current isolators that are portable, durable, and provide great current isolation between test switches.



(CM000080) Nylon Portfolio Bag ---- The RW-3X's nylon portfolio bag gives meter testers the ability to grab-and-go. With ample storage room for all of the cables and leads that come standard with the RW-3X, this bag is both convenient and portable.

RW-3X Accessories Continued

CABLE SETS:

(BW0193XX) RW-30 / RW-31 Portable Three-Phase Meter Site Source Analyzer *Alternate* Basic Cable Set, 8mm / 4mm pins, South America ---- The RW-3X ships with this *Alternate* Basic Cable Set which includes the following:



(BW0115XX) RW-3X Analog Sense Cable ---- The Analog Sense Cable easily clips to the output terminal of a transducer permitting accuracy testing for a wide variety of transducers.



(BW0191XX) RW-3X Potential Cable Assembly Set, 2mm, Right Angle Plugs ---- Our standard potential leads are 8' long and are terminated with 4mm pins. 1000V, 550mA inline fuses provide over-current protection for the RW-3X voltage channels.



(CF000076) Fuse 6.3 x 32, 500mA 1KV, Very Fast Acting ---- Replacement fuses for BW0191XX. 3 spare fuses are included with the basic cable set.



(BW0192XX) RW-3X Braided Current Cables terminated with 8mm Pins ---- This provides the current connections to the meter under test.



(BW0190XX) RW-3X Field Power Cable terminated with 4mm Pins ---- A convenient way to power the unit at the site.



(CE000040) CAT5e RJ45M to RJ-45M Cross-Over Cable, 10 ft (3 meters), Orange ---- With the supplied Ethernet crossover cable, it is a cinch to directly connect the RW-3X to an external laptop for control of the unit without having to connect it to a network.



(CE110021) Shop Power Cord, 9' 10" ---- Back at the shop, the AC shop power cord provides a convenient way to power the RW-3X from a standard 120VAC power outlet.



(CM000080) Nylon Portfolio Bag ---- The RW-3X's nylon portfolio bag gives meter testers the ability to grab-and-go. With ample storage room for all of the cables and leads that come standard with the RW-3X, this bag is both convenient and portable.

RW-3X Optional Accessories

OPTICS OPTIONS:



(AW0005XX) RW-3X OPTOCOM™ Optics Kit ---- Increase the versatility of your field testing with WECO's OPTOCOM™ option. Attach the optic coupler head to properly equipped solid state meter and forget about alignment. When the test is complete, you can program the meter right at the site without having to change out optic heads. Connects to Optics Port 1.



(AW0017XX) RW-3X Reflect and Solid State Optics with Meter Band Clamp ---- This optics solution combines both reflect optics for mechanical meters and pulse detecting optics for solid state meters in one convenient package. Lock down optics arm, easy mode selection, LED indicators, and a secure grip band clamp make this a valuable addition to any field test kit. Connects to Optics Port 2.



(AW0040XX) RW-3X Magnetic Mount Optics, Visible, IR and Mechanical Meter Disk Sensor ---- This option combines both reflect optics for mechanical meters and pulse detecting optics for solid state meters into one handy tool. Attach this optics solution with the flip of a switch to any can-mounted meter. The LED indicators and mode selection make testing a snap. Connects to Optics Port 2.



(AC0015XX) Magnetic Mount Optics Kit, IR and Mechanical Meter Disk Sensor ---- This has been a workhorse for many years, however operation in direct sunlight is a challenge. The AW0017XX and AW0040XX have been developed to address this issue and will perform in direct sunlight. Connects to Optics Port 2.



(AW0006XX) RW-3X Solid State Optics Probe Assembly, Suction Cup, IR Detector ---- When you are faced with a meter enclosure that does not accommodate magnetic or clamp based optics use WECO's Solid State IR Optics Probe Assembly with suction cup attachment to detect the meter's IR emitter. Connects to Optics Port 2.



(AW0007XX) RW-3X Solid State Optics Probe Assembly, Suction Cup, Visible Detector ---- Don't let enclosures that prevent magnetic or clamp based optics attachments keep you from getting quick test results. WECO offers the Visible Solid State Optics with Suction Cup attachment to make sure you can test meters equipped with visible LEDs. Connects to Optics Port 2.



(AW0008XX) RW-3X Click Switch Adapter ---- Sometimes optics just are not an option, and that's when you turn to WECO's Click Switch Adapter. Visually observe the disk's rotation and manually register revolutions with the click of a button. Connects to Optics Port 3.



(AW0020XX) RW-3X Power Cable for Radian RM-DS Meter Disk Sensor ---- This adapter cable plugs into the RW-3X Optics Port 2 to power Radian's RM-DS meter disk sensor. This cable plugs into Optics Port 2. The RM-DS connects to Optics Port 3.



(AW0033XX) RW-3X Optics Extension Cable, 33 ft (10 meters) ---- When your standard optics cable just isn't long enough, reach for WECO's Optics Extension Cable. This cable adds 33 ft (10 meters) to the allowable distance between your optics sensor for the Optics 2 Input and RW-3X. This cable is used with any of the optics that connect to Optics Port 2.

EXTERNAL CURRENT PROBE OPTIONS:



(AW0027XX) RW-3X 20 amp .47\"[12mm] Jaw Transformer Rated Probe Kit, 5 ft + 25 ft Leads ---- This small, compact probe with a .47\" jaw opening is used to measure currents from 40mA to 10A, 600 V maximum.



(AW0013XX) RW-3X Current Probe, 100 amp .47\"[12mm] Jaw Transformer Rated Probe Kit, 5 ft Leads + 25 ft Extension ---- The \"clothespin\" style current probe is most often used for secondary current measurements from 400mA to 100A, 600V maximum.



(AW0014XX) RW-3X 1000 amp, 2.25\" Clamp On Probe Kit, 25 ft Leads, 600 Volts ---- The circular clamp-on probe is used for current measurements with a range of 2.0A to 1000A, 600 V maximum for conductors up to 2.25\" maximum.



(AW0028XX) RW-3X 3000 Amp Square Jaw Probe Kit, 25 ft Leads, 600 Volts ---- This square clamp is great for higher currents, up to 3000A. The square jaw permits multiple conductors or bus bar positioning.



(AW0010XX) RW-3X AmpFlex[®] Current Probe Kit , 100/1000 Amps, 1000 Volts, 36 in, 25 Ft Current Probe Extension Cable (AW0018XX) ---- The AmpFlex[®] current probe kit includes a flexible current sensor for measurements on conductors where standard clamp-on probes cannot be used. The 36 inch sensor with electronic module and a calibration adapter can measure up to 1000 amps, 1000 V maximum.



(AW0052XX - 24 in), (AW0026XX - 36 in) RW-3X AmpFlex[®] Current Probe Kit, 3000 Amps, 1000 Volts, 25 Ft Current Probe Extension Cable (AW0018XX) ---- The AmpFlex[®] current probe kit includes a flexible current sensor for measurements on conductors where standard clamp-on probes cannot be used. The sensor with electronic module and a calibration adapter can measure up to 3000 amps, 1000 V maximum.



(AW0011XX) RW-3X High Voltage **Current** Probe Kit, 2000 Amps, 150kV ---- The high voltage current probe kit includes a fiber optic isolated current probe with 3.85\" wide jaw for current measurements of primary conductors above 600V to 150kV. Use to test CT Ratios. Detachable line hanger, adapter and probe with hot stick mounting capability all come in a convenient carrying case.



(AW0059XX) RW-3X CT Current Boost, 200 Amps, 150kV ---- Use this CT Current Boost module at sites where current is low. For use with through-hole CTs only.

EXTERNAL VOLTAGE PROBE OPTIONS:



(AW0023XX) RW-3X 600V Voltage Probe Kit for Low Voltage PT Testing ---- The 600V PT Probe allows you to check the voltage on systems that are 600 volts and less, allowing you to verify the potential transformer is working correctly.



(AW0012XX) RW-3X High **Voltage** Probe Kit, 40kV ---- This high potential kit is a power quality tool for 10kV to 40kV applications. Determine primary voltage from primary conductors. Use to test PT Ratios. A fiber optic link provides the isolation. Kit comes complete with carrying case, hot stick mounting capability, and adapters.

PROBE OPTIONS:

Extensions and Adapters:



(AW0018XX) RW-3X Current Probe Extension Cable, 25 ft ---- Extend the distance from the RW-3X to the test location by 25 ft with this cable. Connect up to four to increase the overall distance to 100 ft. This option works with all probes listed above.



(AW0019XX) RW-3X Adapter Kit for Customer Supplied Sensor Link Probe ---- For customers who already own compatible sensor link voltage or current probes, this low cost adapter kit makes it possible to use with your RW-3X. Note: for reliable accuracies, send your probe to WECO for calibration.

RW-3X Optional Accessories Continued

KYZ CABLE OPTIONS:



KYZ Cables:

(AW0009XX) RW-3X Form-C KYZ Cable Set, 6.5 ft (3 wire front panel jacks) ---- All you need is a KYZ cable set to conduct a KYZ test or use the KYZ connection to test the meter. Three plugs connect right to the RW-3X front panel jacks by standard yellow, black, and red cables with alligator clips to the meter.



Advanced I/O KYZ Breakout Cables:

(AW0022XX - 8 ft), (AW0025XX - 12 ft), (AA0029XX - 18 in) RW-3X Advanced I/O KYZ Breakout Cable ---- This cable is used to connect KYZ outputs from meters into the RW-3X's Advanced I/O Connector. The connector has two Form A input channels that can be independently configured as four Form C input channels. The Advanced I/O Connector also has two Form A output channels and one Form C output channel.

ADDITIONAL VOLTAGE AND CURRENT LEAD OPTIONS:



(AW0046XX) RW-3X Voltage and Current Cable Alternate Termination Assembly Set, Right Angle, Customer End Unterminated ---- This set includes a RW-3X Potential Cable with right angle, customer unterminated ends and a RW-3X 'A', 'B', 'C' Phase Current Cable with right angle plugs, customer unterminated ends.



(AW0048XX) RW-3X Voltage and Current Cable Set, Switchboard Meters, 4mm Plugs for Test Paddle Terminations



(AW0049XX) RW-3X Voltage and Current Leads Extension Kit, 12 ft ---- This extension kit increases the distance from the RW-3X to your test switch by 12 ft. It supports up to 600V and 15A per phase. This also includes a 12 ft optics and optics coupler extension.



(AW0050XX) RW-3X Braided 'A', 'B', 'C' Phase Current Cables with Open CT Saf-T-Plugs, Right Angle Plugs ---- Right Angle Plugs are highly recommended. The special Saf-T-Plugs have a protection circuit at the test switch connection which will short the CT if an open circuit condition is detected.

RW-3X Optional Accessories Continued

STANDARDS COMPARE KITS:

Use an external standard and a WECO Standards Compare Kit you can make sure your RW-3X's internal standard is delivering the high accuracy results you need. All of the necessary cables are included, and the RW-3X's on-board software provides simple to use test step entry to make the standards compare test a snap.



(AL0032XX) RW-3X Standards Compare Kit for an External RD-2x or RD-3x Standard



(AL0033XX) RW-3X Standards Compare Kit for an External RM Standard

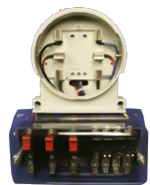


(AW0047XX) RW-3X Cable Set for RM/RD/uJoule Interchange Standard ---- This cable set allows for an external Radian standard or uJoule to be put in series with the RW-3X during a meter test for tie line testing.

MISCELLANEOUS OPTIONS:



(AX0023XX) RW-3X, Barcode Scanner Option ---- The RW-3X's onboard software has been built from the ground up to take full advantage of barcode scanning to save you valuable time when meter testing in the field. With just one scan of a barcode you can automatically enter the meter's faceplate information, load the appropriate test sequence, and recall the last saved results for that particular meter.



(CA000581) TTS-8 Temporary Test Switch for 5S meter ---- This allows you to remove a socket meter, plug in the adapter with the test switch and then plug the meter into the adapter for 5S meters.

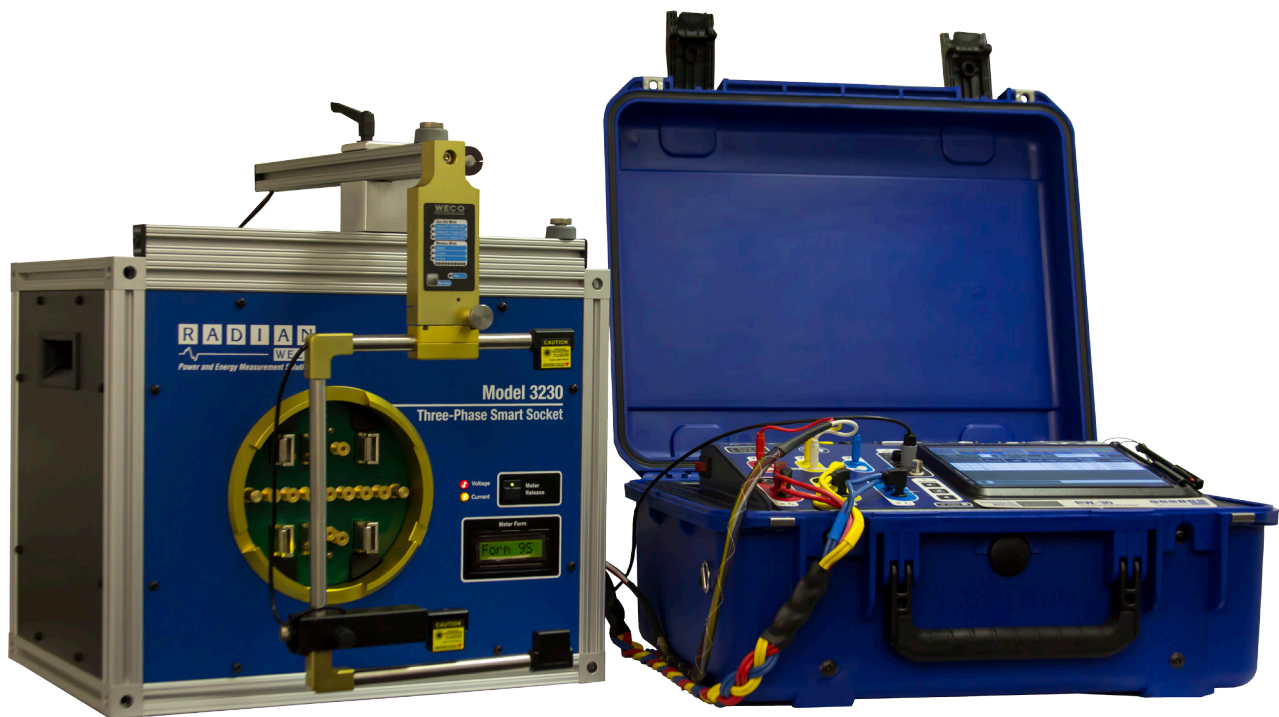


(CA000579) TTS-13 Temporary Test Switch for 6S and 9S meters ---- This allows you to remove a socket meter, plug in the adapter with the test switch and then plug the meter into the adapter for 6S and 9S meters.



(AE0016XX) Model 3230 M3230 3-Phase Shop Stand Adapter for RW-3X, Integrated Smart Socket, USB Interface ---- This allows you to utilize the RW-3X's features while on site in the van, as well as back at the shop. See the following page for additional information.

Redefine Meter Testing With The Combination Of The RW-3X And The Model 3230



Utilize the RW-3X's features while on site in the van, as well as back at the shop with the Model 3230 Three-Phase Smart Socket. The 3230 features built-in laser optics, Smart Socket™ technology and automatic meter form selection. Connect the RW-3X to the 3230 side panel using the included cables and the RW-3X Winboard Embedded software automatically sets the meter form, which will then populate on the Model 3230 LCD display panel, and now you are ready to test. Not only does the 3230 make testing meters a snap, but it expands the current capability of the RW-3X to a full 50 amps, allowing the user to test class 320 amp meters.

With lock-down optics that stay where you put them and a simple push-button design for easy optic selection, the Model 3230 is ideal for van mounting. With the 3230 attached you have all the power of the Model 2350 plus the ability to quickly remove the RW-3X for testing right at the site.

The RW-3X/3230 combination is a revolutionary testing package that redefines the state-of-the-art in meter testing.

Features:

- ▶ Form selection controlled from the RW-3X; no additional setup required or connection changes
- ▶ Minimal insertion force Smart Socket™
- ▶ Compensated current boost transformers for doubling the RW-3X's 30 amp max current to 50 amps per phase
- ▶ Barcode scanner input
- ▶ Laser optics



Features

- Microsoft Windows® 7, 64 bit operating system
- RW-30: three-phase Radian Research RD-30, 0.04% high-accuracy internal standard recognized and accepted by NIST
- Optional RW-31: three-phase Radian Research RD-31, 0.02% high-accuracy internal standard recognized and accepted by NIST
- Fuse protection on all voltage leads at point of connection
- Auxiliary power is protected by the circuit breaker.
- 2 USB ports
- 1 VGA port
- 1 Ethernet 10/100 port
- 1 Embedded WiFi Adapter
- 1 COM port
- 1 simple three wire KYZ input
- Advanced I/O port:
 - >> 4 KYZ inputs
 - >> 2 KZ inputs
 - >> 1 KYZ output
 - >> 2 KZ outputs
- Optical communications port
- 5 pin REDEL® connector for meter optical probes
- BNC connector for pulse out (standard pulses or test pulse), click switch input, and external standard compare pulse input
- Pulse LED
- Audio pulse volume control
- 3 voltage status LEDs (1 per phase)
- 3 current status LEDs (1 per phase)
- 3 current transformer clamp-on inputs (1 per phase)
- Per phase potential color-coded safety jacks for potential and current inputs/outputs
- Potential and current distinctively sized safety jacks to ensure effortless accurate connections
- 4 quadrant, 3 phase, simultaneous measurements for active, reactive and apparent energy and power
Functions include:
Watt hours, volts, amps, phase angle, power factor, VAR hours, Q hours, watts, VA hours, VA, VARS, frequency, forward and reverse energy flow. Optionally test average responding VAhrs, VA, Volts, Vhrs, amps, Ahrs.

Specifications

- **Voltage Sources:**

- >> *Voltage output: 20 to 600 volts AC with 100mV resolution, 30VA per phase*
- >> *Voltage accuracy: $\pm 0.2\%$, $\pm 10\text{mV}$ true RMS*
- >> *Voltage harmonic distortion: Less than 1% THD worst case (pure sine wave selection)*
- >> *Harmonics sourcing: Through the 60th order user-defined per phase*

- **Current Sources:**

- >> *Current output: 0.01-30A per phase with 1mA resolution, 50VA per phase, 2.5V max compliance*
- >> *Current accuracy: $\pm 0.2\%$, $\pm 1\text{mA}$ true RMS*
- >> *Current harmonic distortion: Less than 1% THD worst case (pure sine wave selection)*
- >> *Harmonics sourcing: Through the 60th order THD user-defined per phase*

- **Energy Measurement Error Direct (0.2A to 30A and 30V to 600V):**

- >> *Energy Error for active, reactive and apparent power is subject to the selected integrated Radian Reference Standard:*
RD-30 = $\leq \pm 0.04\%$
RD-31 = $\leq \pm 0.02\%$

- **Power Measurement Error Indirect with MN03 clip on CT and RC-CTA1 adapter (0.2A to 100A, PF = 1):**

- >> *Active and Reactive; $\leq \pm 0.20\%$ (0.2A to 100A)*

- **Phase Control:**

0°-359.95° in 0.05° steps

- **Phase Accuracy:**

$\pm 0.10^\circ$

- **Test Frequency:**

45-65Hz in 0.001Hz steps

- **Test Frequency Accuracy:**

0.005%

- **Auxiliary Power Input Range:**

*90-300V AC
6 amp breaker*

- **Input Frequency Range:**

45-65Hz (fundamental)

- **Case Dimensions and Base Weight:**

*20"W \times 9"D \times 16.5"L, 43.6 lbs
508mm W \times 228.6mm D \times 419.1mm L, 19.77kg*

- **Temperature:**

- >> *0°C to 55°C (32°F to 131°F) operation*
- >> *-20°C to 70°C (-4°F to 158°F) storage*

- **Humidity:**

0%-95% non-condensing

- **Warranty:**

Two (2) year limited warranty (all parts and labor).

- **Service:**

All required service on the Model RW-3X will be completed from the office of Watthour Engineering Company, Inc., a Radian Research Company, located in Pearl, MS. WECO maintains a stock of all components and should a part fail, would in most cases be able to provide a replacement part within 48 hours.